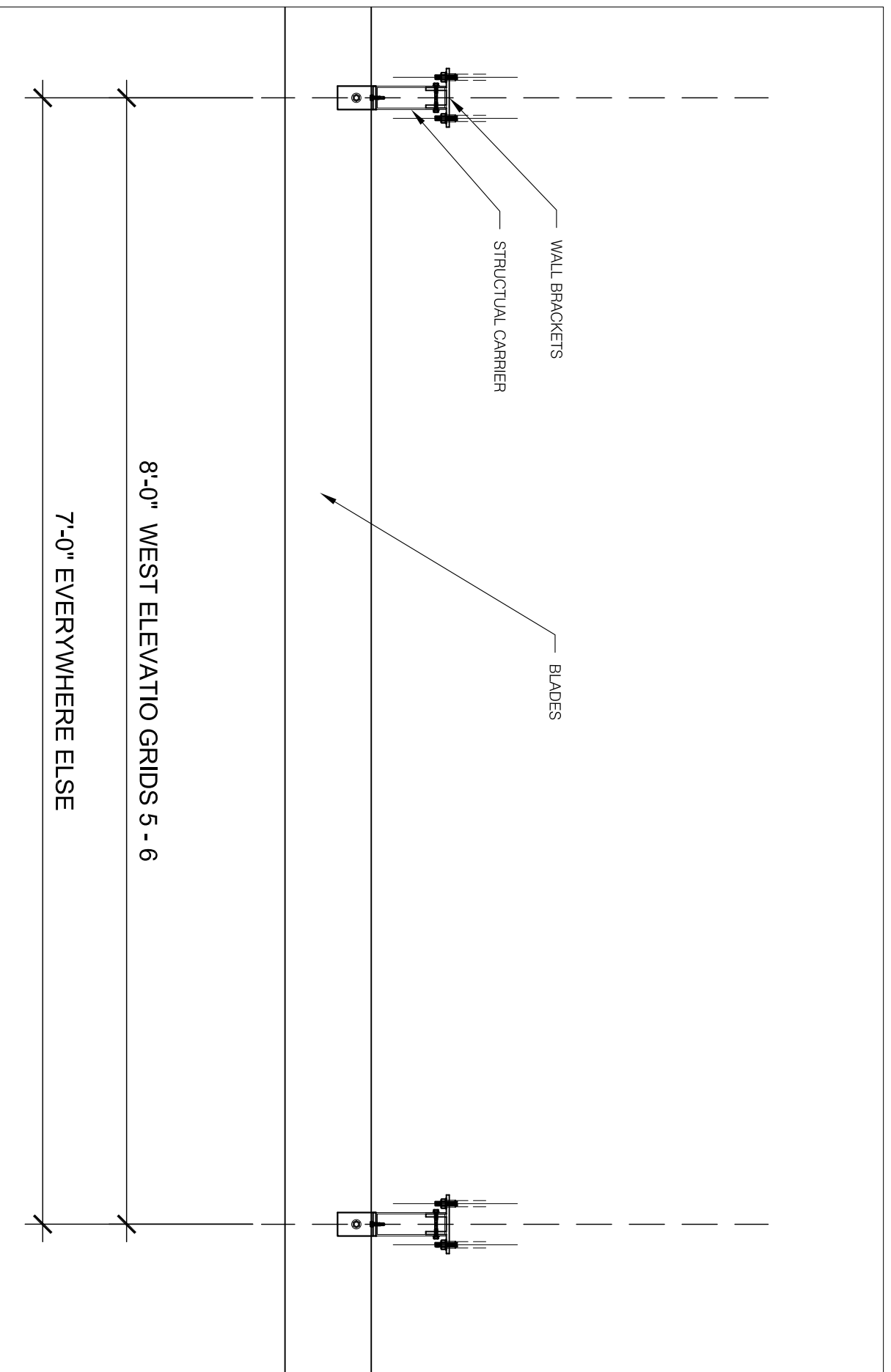


**MODEL VA8-700-10 INSTALLATION SECTION
TYPICAL FOR LEVEL 2, 3 AND 4**



**MODEL VA8-700-10 INSTALLATION PLAN
TYPICAL FOR LEVEL 2, 3 AND 4**

NOTES:

The structural carriers will be shipped assembled with the two (2) wall brackets and six (6) blade brackets preattached. Installer is to anchor carrier to structure with two (2) anchors per bracket or four (4) per carrier.

The blades are shipped loose cut to size and fitted with end caps and ready to stall onto blade brackets. Installer is to place blade in the blade brackets and attach it to the bracket with two (2) fasteners.

Holes on wall brackets and blade brackets will be predrilled in the shop.

general notes	

no.	description	date



TENPLUS
 ARCHITECTURAL PRODUCTS LTD
 5 - 2333 MILLRACE COURT
 MISSISSAUGA, ON L5N 1W2
 TEL: 905-363-2306
 FAX: 905-363-2309
 www.tenplus-online.com

project:	
spec section:	
customer:	
architect:	
ten plus representative:	

drawing:
SUNSHADE MODEL
VA6-700-10

scale:	
date:	
drawn by:	TEN PLUS
checked by:	

sheet no. **TP1**